

TECHNICAL SPECIFICATIONS

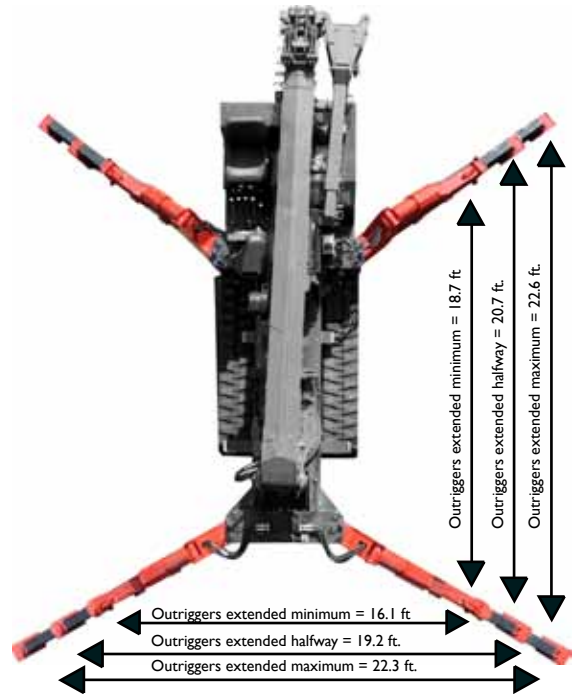
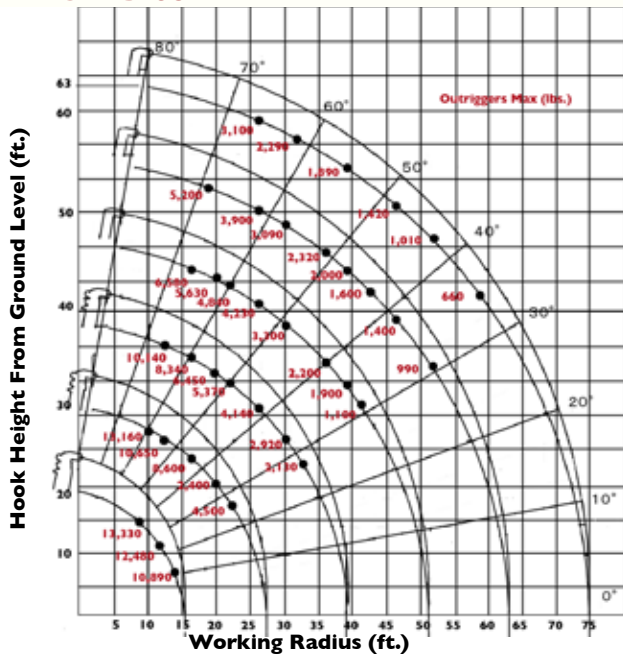
ASME/B-30.5 Compliant

DESIGNED TO GO WHERE OTHER CRANES CAN'T

Engineered and manufactured by the Japanese crane industry leader FURUKAWA UNIC Corp., the SPYDERCRANE offers versatility, maneuverability and lifting capacity in a compact design which enables you to quickly, safely and easily meet all of your restricted and confined-area lifting requirements. SPYDERCRANES are distributed in North America by SPYDERCRANE Sales, LLC. of Arizona. Each unit is backed by our 20-plus years of industry and application experience, complete inventory of genuine spare parts and accessories, and superior local service support.



WORKING RADIUS



LOAD CHART Lifting capacity varies depending on outrigger configuration and boom length and angle.

FIRST STAGE EXTENDED										
Working Radius (ft.)	9.0	10.0	11.5	13.0	14.0					
Outriggers Maximum (lbs.)	13,330	13,200	12,480	10,890	8,810					
Outriggers Halfway (lbs.)	13,330	13,200	12,480	10,890	8,810					
Outriggers Minimum (lbs.)	13,330	13,200	12,480	10,270	8,370					
ALL BOOMS RETRACTED AND SECOND STAGE EXTENDED										
Working Radius (ft.)	6.5	10.0	11.5	13.0	16.5	19.5	23.0	23.5		
Outriggers Maximum (lbs.)	13,330	13,160	12,300	10,650	8,600	6,400	5,040	4,500		
Outriggers Halfway (lbs.)	13,330	13,160	12,300	10,650	8,600	5,200	3,840	3,520		
Outriggers Minimum (lbs.)	13,330	13,160	12,300	10,440	5,900	3,550	2,630	2,420		
THIRD STAGE EXTENDED										
Working Radius (ft.)	9.0	13.0	16.5	19.5	23.0	26.0	30.0	32.0	33.0	
Outriggers Maximum (lbs.)	10,140	10,140	8,340	6,450	5,370	4,140	2,920	2,130	2,200	
Outriggers Halfway (lbs.)	10,140	10,140	8,340	5,480	3,950	3,010	2,100	1,600	1,650	
Outriggers Minimum (lbs.)	10,140	10,140	6,200	3,640	2,750	2,010	1,470	1,030	980	
FOURTH STAGE EXTENDED										
Working Radius (ft.)	16.5	19.5	23.0	26.0	30.0	32.0	36.0	39.0	42.0	
Outriggers Maximum (lbs.)	6,580	5,630	4,840	4,230	3,300	2,700	2,200	1,900	1,100	
Outriggers Halfway (lbs.)	6,580	5,580	4,170	3,240	2,430	1,950	1,550	1,340	990	
Outriggers Minimum (lbs.)	6,100	4,000	2,960	2,350	1,670	1,290	1,050	840	630	
FIFTH STAGE EXTENDED										
Working Radius (ft.)	19.5	26.0	30.0	32.0	36.0	39.0	43.0	46.0	49.0	52.0
Outriggers Maximum (lbs.)	5,200	3,900	3,090	2,720	2,320	2,000	1,600	1,400	1,220	990
Outriggers Halfway (lbs.)	5,200	3,470	2,520	2,160	1,770	1,450	1,180	990	770	650
Outriggers Minimum (lbs.)	4,300	2,470	1,780	1,520	1,210	1,000	750	610	480	390
SIXTH STAGE EXTENDED										
Working Radius (ft.)	26.0	32.0	39.0	46.0	52.0	59.0	61.0			
Outriggers Maximum (lbs.)	3,100	2,290	1,890	1,420	1,010	660	550			
Outriggers Halfway (lbs.)	3,100	2,280	1,560	1,090	790	550	440			
Outriggers Minimum (lbs.)	2,540	1,630	1,120	720	500	300	230			



URW706 MINI-CRAWLER CRANE

		URW706C2URS	URW706C2UMRS
Crane capacity	Capacity:	13,200 lbs. @ 10.0 ft.	
Max working radius	Maximum:	1.7 to 61 ft.	
Max lifting height	Approximate:	75 ft.	
Turning radius (ft.)	Minimum:	TURNS WITHIN IT'S DIMENSIONS	
Dimensions (ft.)	Folded: (l x w x h)	18.4ft. X 5.47ft. X 7.16ft.	
Weight	Unladen:	17,590 lbs	
Outrigger point loading	Maximum:	Specific point landing available upon request	
Winch speed	Approximate:	Single line speed: 144.4 ft./minute at 4th layer Hook Speed: 36.1 ft./min at 4th layer with 4-part line	Diesel
			Electric Single line speed: 58.1 ft./minute at 4th layer Hook Speed: 14.4 ft./min at 4th layer with 4-part line
Telescopic system	Boom Length:	16 to 63 ft.	
	Hydraulic Telescopic with holding valves:	47.2 ft/52 sec	Diesel 47.2 ft/90 sec Electric
	Boom type:	6- section hydraulicity telescoping boom, hexagonal box construction	
Boom lift speed	Hydraulic with holding valves	0° to 80°/16 sec	Diesel 0° to 80°/37 sec Electric
Swing rotation	Worm Drive	360 degrees continuous	
Traction System	Travel Speed:	Two Speed	Low: 1.86 mph High: 3.92 mph
	Gradability:	23°	
	Track ground pressure:	12.47 psi	
Engine / Motor	Manufacturer:	Yanmar	Yanmar
	Fuel Capacity:	19.6 gal	19.6 gal N/A
	Maximum output:	31.51 HP	Diesel 31.51 HP Electric 10 HP / AC 208-240 V/3 Phase/60HZ
	Starting method:	Electric start as standard	
	Type:	Diesel	Diesel & Electric
Standard and safety equipment	Full-function radio remote control, centrally located infinitely variable controls, onboard self-diagnostic computer system, hexagonal boom, anti-two block system, automatic hook stow system, hook safety latch, over-winding prevention device and alarm, working area limitation minimum wire rope automatic stop, hydraulic circuit pressure relief valve and bubble-style level for outrigger leveling, Rated Capacity Indicator, (L.M.I) Interlock Monitoring Outrigger System.		

Product specifications are subject to change without notice. No specific training or license is required to operate the SPYDERCRANE in most areas, but operators are responsible for knowing and meeting all local safety requirements and regulations.

SPYDERCRANE

5326 W. MOHAVE STREET | PHOENIX | AZ 85043 | Toll Free 800.452.5011

www.spydercrane.com

706 Specs Sheet V.04